

# BICYCLES FOR HUMANITY

Changing the World – Two Wheels at a Time





# What Is B4H Colorado

- A grass roots organization based here in Colorado
  - **100%** of proceeds fund the cause
  - Founded in 2007
- Partners with the Bicycle Empowerment Network (BEN) in Windhoek Namibia
  - Sources partner communities (i.e. Peace Corps, CAA)
  - Has facilitated the delivery of over 10,000 bikes
  - Partners with governmental aid agencies (USAID, AUSAID)
- Provides the gift of transport to mobile healthcare workers
- Creates a sustainable ecosystem
  - Ongoing community bike shop and employment
  - Profits of the bike shop fund the community health clinic





# Mission

Empower people in disadvantaged communities and countries

To improve:

- access to health care, educational and social services where mobility is an impeding factor
- the delivery of services by teachers, health care workers, and other extension workers.
- economic productivity by improving transportation
- Empower women through equal access to healthcare and professional opportunities





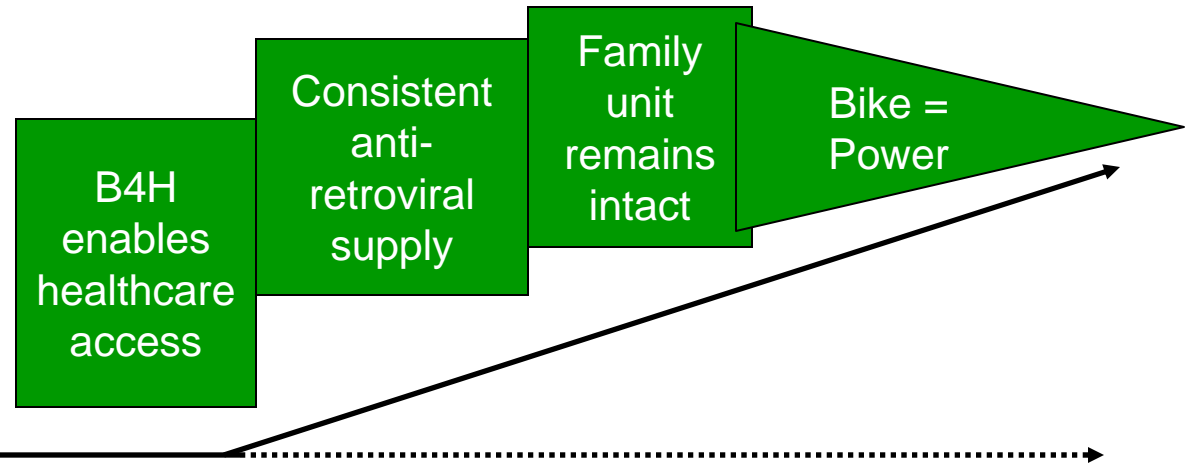
# Women's Empowerment

- Girls 70% more likely to go to school if their family owns a bike
- B4H selects women for leadership positions
  - Lead bike mechanic trainer- Paulina
  - Singalamwe bike shop manager - Cecila
- 50% of bike shop staff are women
- Women disproportionately impacted by lack of mobility
  - Equal access to healthcare
  - Getting produce to market for sale
  - Getting goods and crafts to market for sale





# Changing the Course of Events



Husband travels distances to find work usually to quasi urban areas

Husband contracts HIV and transmits to wife

Wife has poor access to healthcare

Dependent on husband for financial support

HIV progresses and takes toll on family

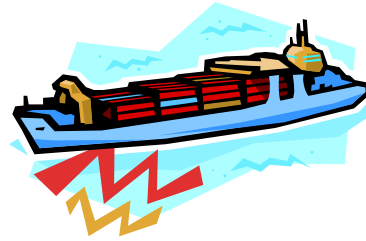
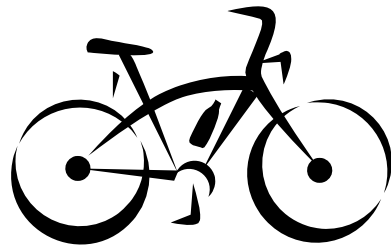
Children orphaned or taken care of by other family members

- Girls 70% more likely to go to school if a bike is in the family
- Healthcare workers can travel 4X the distance vs. on foot





# Sustainable Mobility -The Process





# Governance

- Fully formed 501 (c)(3) non profit
- IRS approved tax exempt status
- Four active board members
- Three directors with full corporate governance
- Full transparency on sources and uses of funds
- Qualified for grants from charities and foundations





# We:

- Enable equal access to life saving retro-virals
- Help empower women through financial independence
- Provide transport to those most in need
- Provide kindergarten education to children
- Do it in a sustainable manner
- Create small businesses-not aid

**We Change the World Two Wheels at a Time**





# What Makes Us Successful

## A confluence of events:

- Strong and reliable in country partners
- An aid organization committed to the bike shop
- A town council willing to provide us land to open the bike shop
- Community of tribal elders willing to support the project
- A rural community where transport is a major impediment to receiving healthcare
- A warm community who would greet us with open arms and helping hands





# Partners



**Experience Plus!**  
Bicycle Tours since 1972



PHONE:  
(303) 424-3221  
(888) RIDE-WRC  
  
ADDRESS:  
7085 W. 38TH AVE  
WHEAT RIDGE, CO 80033



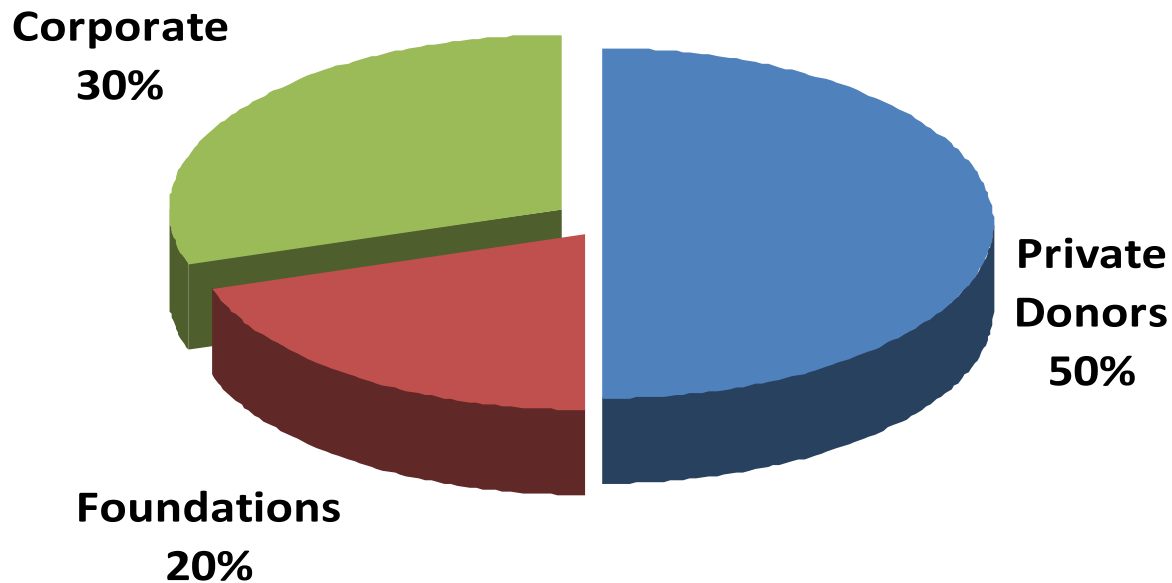
INTERNATIONAL MOUNTAIN BICYCLING ASSOCIATION





# Resources: Financial

## Donations



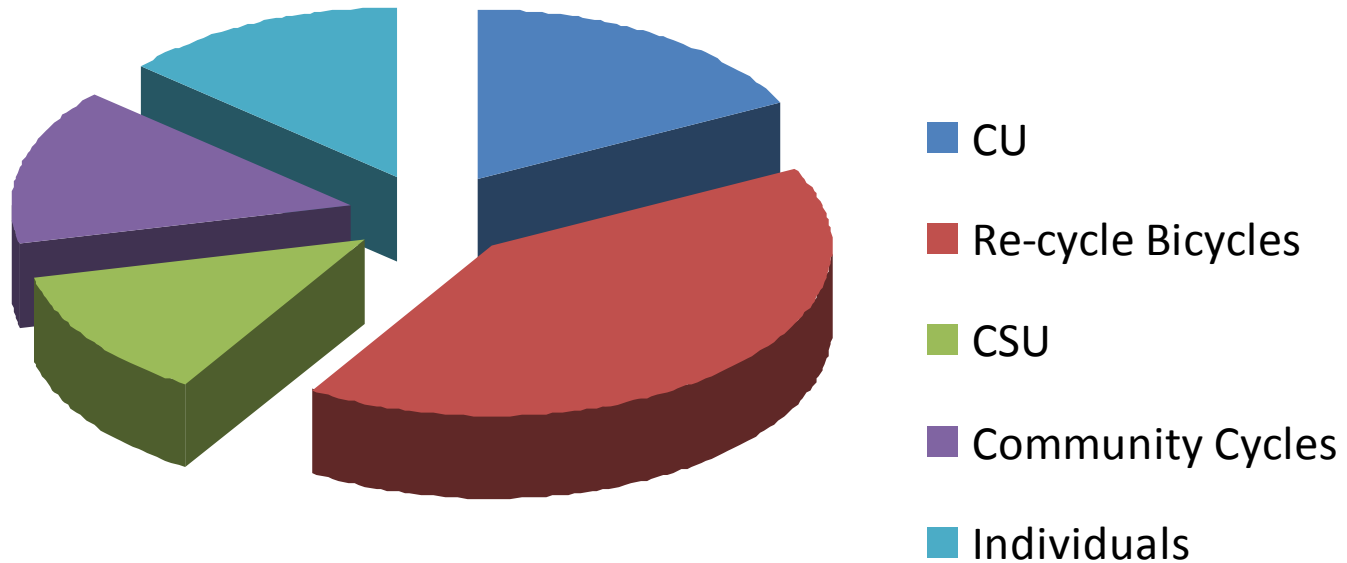
**Bicycles for Humanity Colorado operates on a 100% volunteer basis with No paid staff**





# Resources: Bikes

400 per shipment

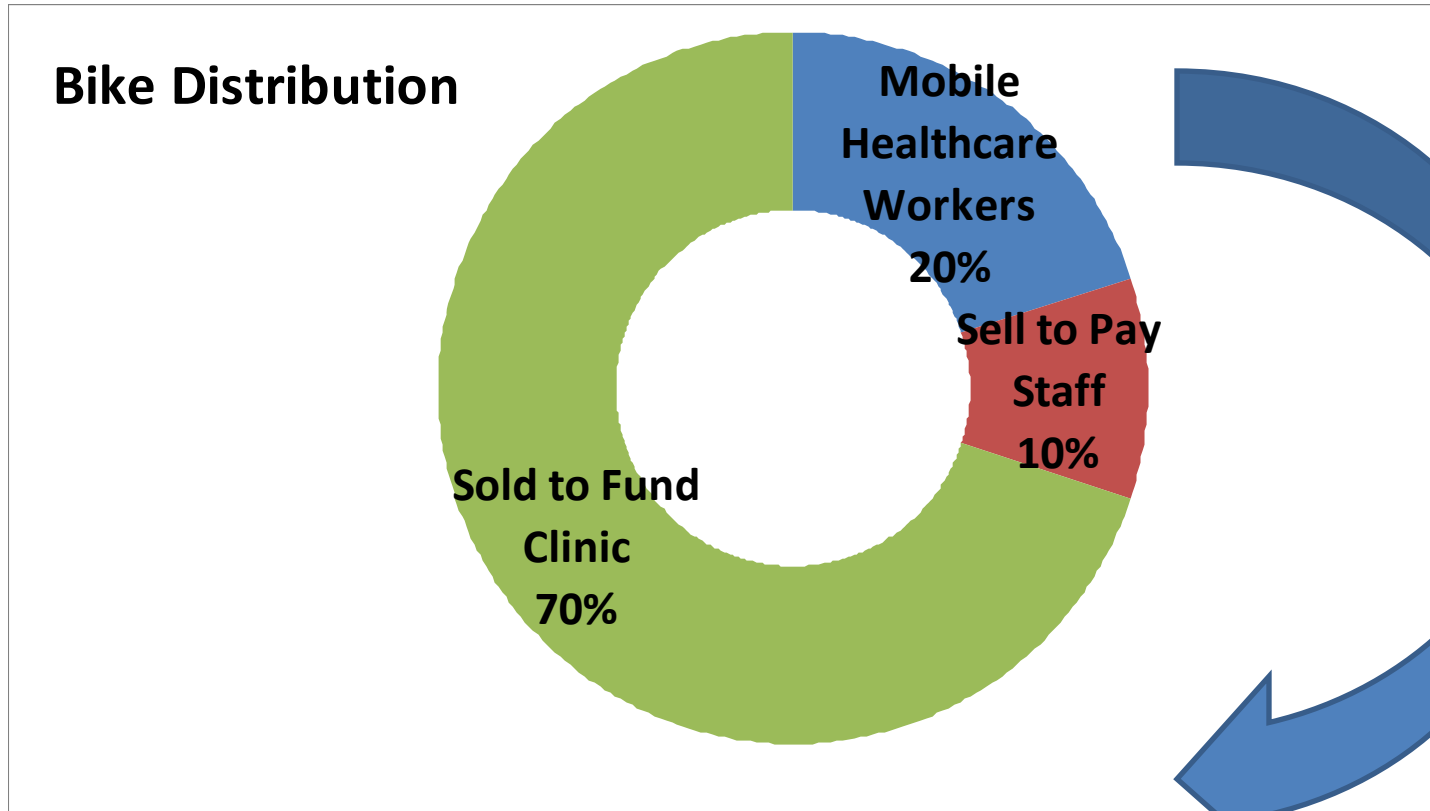


- All of the above provide continued sustainable sources of bikes
- Bike shops help as well – Full Cycle & Wheat Ridge Cyclery





# The B4H - Circle of Life



A complete ecosystem of sustainable:

- Employment
- Funding for the health clinic
- Mobility for home based healthcare workers





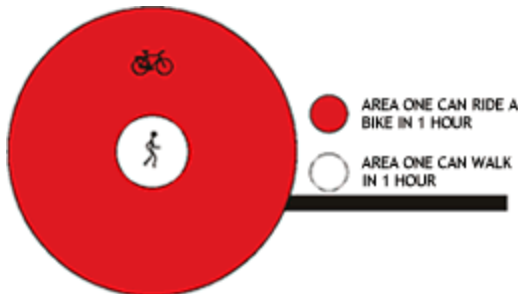
# The Impact

## \$12K =

- 400 bikes to aid workers
- 4 incremental visits per day per worker
- 1600 incremental visits per day/total
- 8000 per week
- 32,000 per month
- 1.6M per year

## Time

The average person can walk 2.5 miles in 1 hour – this equals access to an area of approximately 20 square miles. By bicycle, that same area would be equivalent to 310 square miles.



Over equal units of time, one can ride a bicycle 4 times the distance as one can travel on foot.

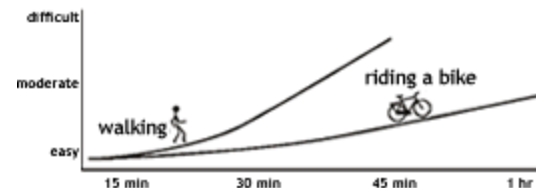
## Capacity

Riding a bicycle increases one's capacity to carry by 5 times.



## Effort

As time increases, effort to travel increases. Riding a bicycle requires less effort, allowing one to travel farther in less time.





# Current Locations



Nkurenkuru '08

Nkurenkuru  
Kindergarten '10

Bunya '10

Singalamwe '09



## Over 1,500 bikes shipped

- Border towns
- Limited to non-existent healthcare
- Long distances to clinics
- High HIV infections rates
- Solid NGO presence





# 2011 Projects

- New bike shop in Ndola, Zambia
  - In partnership with Zambikes and Seeds of Hope
  - Ship date – Jan 31
  - Opening date – early May
- Singalamwe expansion & re-supply
  - Increased footprint and services
  - 300 additional bikes
  - Ship date - April
- New bike shop on Mfangano island, Kenya
  - In partnership with Organic Health Response
  - 400 Bikes
  - Ship date – target September
- Community Engagement
  - Catalyst School
  - University of Colorado





# Community Engagement

## Building a Bridge with High School “Catalysts”

<p><b>Conflict</b></p>		<p><u>Cause</u></p> <p><i>Frustration / Anxiety with Traditional Learning Environments</i></p>	<p><u>Effect</u></p> <ul style="list-style-type: none"> <li>• “Drop Out”</li> <li>• Loss of Empowerment</li> </ul>
<p><b>Solution</b></p>	<ul style="list-style-type: none"> <li>• Individual Learning Experience</li> <li>• Contract-based curriculum built on the student’s strengths, styles, academic and emotional needs and passions.</li> </ul>	<p><u>Mission</u></p> <p><i>“Empower Students to Achieve both Academic and Personal Goals”</i></p> <ul style="list-style-type: none"> <li>• Lafayette, Colorado</li> <li>• Accredited by NCA CASI</li> </ul>	
<p><b>Platform</b></p>	<p><u>Partnership with B4H Colorado</u></p> <ul style="list-style-type: none"> <li>• 3 (or More Students) with a Sponsoring Teacher</li> <li>• B4H Colorado Guidance “Partners”</li> <li>• Project Ownership and Partnership with In-Region Sponsor</li> <li>• Operational Planning &amp; Execution (Start-to-Finish)</li> <li>• Community Outreach – Visit In-Region Partners</li> </ul>	<p><u>Goal</u></p> <p><i>“Gain Leadership Skills Through Experience”</i></p>	



# Accountability

- Bike shop 100% locally managed
- Local team has full authority on pricing of bikes and services
- Cash and carry business –layaway allowed
- Daily recording of all sales
- Monthly reporting to B4H & BEN supplies financial data and written write up of successes and challenges





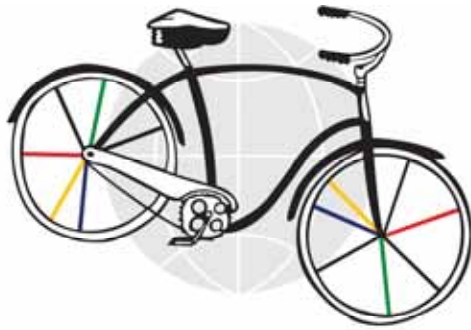
# The Result

The UUKUMWE Bike Shop – means “Togetherness”





# Stay in the Know



BICYCLES for HUMANITY

facebook

**Search Bicycles for Humanity Colorado**

[WWW.B4HColorado.org](http://WWW.B4HColorado.org)





BICYCLES  HUMANITY

# Fueled By Optimism

